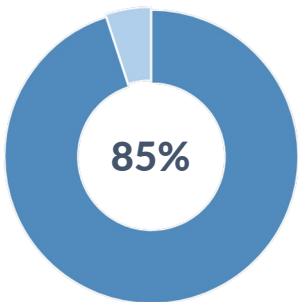


# Next Generation Total Email Protection

US businesses are the highest targeted businesses in the world for phishing attacks.

Source: Wombat Security



85%

Of data breaches are caused by human error.

Source: Verizon



\$54M

In 2020, US businesses lost over \$54M due to phishing attacks alone.

Source: FBI

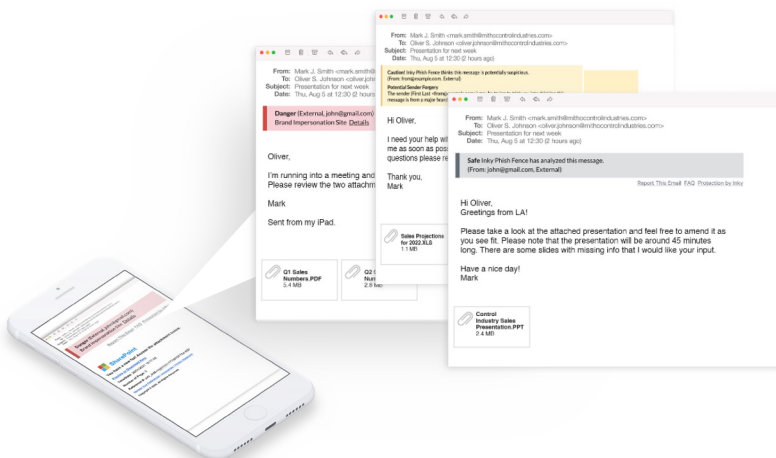


30% of phishing emails are opened by company employees.

Source: Verizon Enterprise

## Revolutionary email security that works.

Our cloud-based security platform, based on INKY technology, **works on Microsoft 365 Exchange, Exchange, or Google Workspace**. It's an effective anti-phishing solution that adds a thin – but powerful – layer that blocks threats, empowers users, and protects organizations.



**The Email Assistant** is always available, on any system or device - educating and enabling users through interactive color-coded banners on every email.

**Computer Vision** and text analysis models see emails much the way a person would – but better – so even very convincing forgeries get blocked.

**Social Graphing** builds dynamic profiles and behavior models of senders to block impersonation attempts.

[FlagshipNetworks.com](https://www.flagshipnetworks.com) • 100 Beard Sawmill Rd Suite 340, Shelton, CT 06484 • 203.358.0800

Contact us to schedule a demo.

# We Help Companies Secure Email



Unparalleled phishing protection blocks threats and empowers employees.

Today's cybercriminals employ a variety of incredibly sophisticated techniques that elude even the most skeptical and well-trained eyes. This is where the technology excels. Through innovative computer vision, AI, and machine learning, it catches everything.

## How Flagship Networks Stops Phishing with INKY



### Content Disarm and Reconstruct

Parses every HTML email and reconstructs it to ensure no malicious content like JavaScript or cross-site scripting attacks make it through. This unique email defense is akin to Content Disarm and Reconstruct (CDR) for office documents.



### Brand Forgery Identification

Renders every email and runs machine learning classifiers on the output. This unique and innovative approach allows our solution to see each email much like the human recipient, and to understand what brand, if any, originated the mail.



### Stylometry for Sender Profiling

Maintains a sender profile for literally every single email sender it has encountered. This profile encodes aspects of the sender's writing style, word choices, and punctuation usage, and provides a powerful tool for identifying account takeovers and other impersonations of individuals. No other system does anything like it.



### Email Assistant

Provides more than 75 types of guidance on the email that users receive, within their inbox, no plugins required. This turns real emails into teachable moments, training users on both potential threats and highlighting sensitive emails like payment requests.

[FlagshipNetworks.com](https://www.flagshipnetworks.com) • 100 Beard Sawmill Rd Suite 340, Shelton, CT 06484 • 203.358.0800

Contact us to schedule a demo.